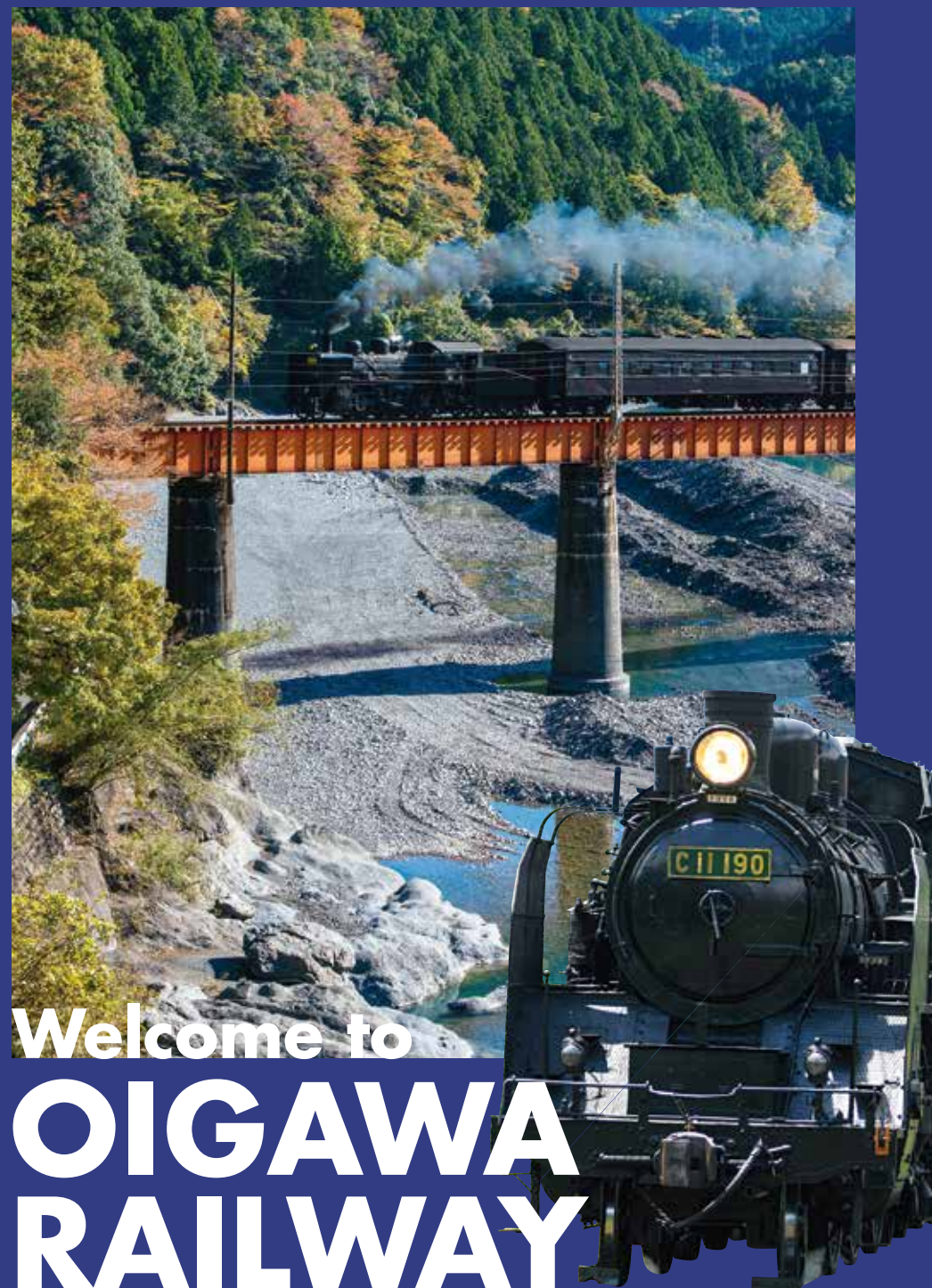


Visit our website for fares, timetables and other info  
[oigawa-railway.co.jp/en/](http://oigawa-railway.co.jp/en/)  
 Telephone \*Japanese only  
**+81(0)547-45-4112** (9.00-17.00)



**Oigawa Railway Co.,Ltd.**  
 〒428-8503 1112-2 Kanaya Azuma, Shimadashi,  
 Shizuoka, Japan



# Welcome to OIGAWA RAILWAY

Vistors' guide

ENGLISH

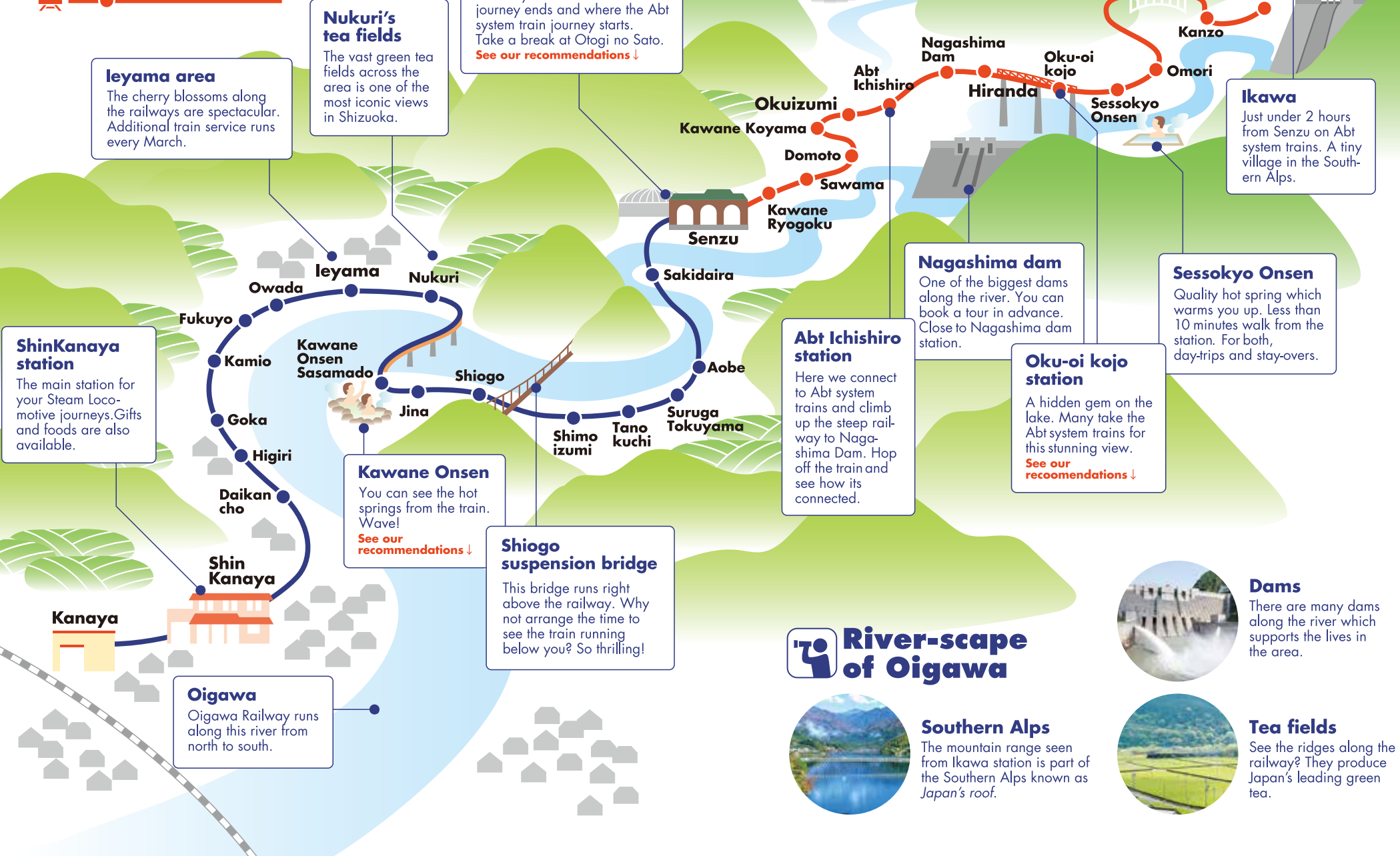
## Sit back and relax... another way to enjoy train journeys in Japan

Oigawa Railway  
 - the only railway in Japan running Steam Locomotives throughout the year on daily basis.  
 Come and see the Japanese countryside on these nostalgic trains.  
 You will witness the views you have never seen before...





# Welcome to Oigawa Railway!



## Enjoy our one and only Steam Locomotive experience!



### Steam Locomotives

Oigawa Railway is the only railway in Japan running Steam Locomotives throughout the year. Our four running steam locomotives were made back in 1930s and 40s-just like a classic car. All unique in their own ways, including the sound of the whistle. Since we started this Steam Locomotive project in 1976, we have been leading other railways in this field and continuing to improve. You can book a trip to the maintenance workshop at ShinKanaya station. (See website for details...<http://oigawa-railway.co.jp/en/storage>)

◀ C10 Model 8 is our oldest train built in 1930. It is the only existing C10 model locomotive.



### Passenger carriages

The history of the passenger carriages, running with our Steam Locomotives, goes back before the war. Occasionally they are used for films and TV shootings for its unique atmosphere.

### Conductors

Your journey will be accompanied by our friendly conductors who will guide you all the way with some music and a big smile.



### Abt System Trains

Abt trains can go up and down the steep mountains with its rack wheel pinions meshing with a toothed rack running in the middle of the railway. They were introduced in 1990 when a new railway was laid to cover a section with a 90m height difference, which was created as the original line went below water surface due to Nagashima dam's construction. Oigawa Railway is the only railway in Japan using this system. (See website for details...<http://oigawa-railway.co.jp/en/abt>)

▶ Between Abt Ichishiro station and Nagashima Dam station is the steepest railway running in Japan.



### Hop off the train to explore!

## Recommended spots



### Okui-oi Kojo station

The unmanned station in the middle of an iron bridge crossing Sesso Lake is popular for its view. There's also a hiking trail to Sessokyo Onsen station. (See website for details...<http://oigawa-railway.co.jp/en/course/sessokyo>)

**Access:** Take the Southern Alps Abt Line for Okui-oi Kojo station or take a bus from Senzu station. Approx. 20-min walk from Kojo Iriguchi bus stop.



### Otoi no Sato

Take a break at this cultural facility next to Senzu station. There is a cafe and a shop full of Oigawa specialties.

**Access:** Approx. 2-min walk from Senzu station.



### Sumatakyo Onsen/ Yume no Tsuribashi

Sumatakyo Onsen is known for its slimy water which is believed to be good for your skin. You can enjoy a day trip or a stay at a ryokan with specialty dishes. It's 30-min walk to the bridge known for its dream-like view. Take a therapeutic walk in the forest. (See website for details...<http://oigawa-railway.co.jp/en/course/sumata>)

**Access:** Take the Oigawa Main Line for Senzu station, followed by a 40-min bus ride for Sumatakyo Onsen. Or take the Ikawa line for Okui-oi Kojo station, followed by a 30-min bus ride.

### Kawane Onsen Fureai no Izumi

A spa popular for its hot spring from which you can see a bridge. Enjoy the local atmosphere by visiting the shops and restaurants.

**Access:** Approx. 5-min walk from Kawane Onsen Sasamado station on Oigawa Main Line.

## Gifts to buy

We recommend the items you can only buy on the Steam Locomotives.



Packed with red beans  
**Steam Locomotive wheel cake**

For your little ones  
**Connect and go!**

Goes well with green tea  
**Steam Locomotive cake**

### Gift shops

#### ShinKanaya station Plaza Loco

Opposite to ShinKanaya station. Obento boxes and drinks are also available. Opening hours: 9:00-17:30



#### Senzu station Kiosk

Local specialties as well as train-related items. Opening hours: 9:30-16:30 (changes in winter)

## Food to go

To accompany your journey...



#### Eki-ben

Obento boxes with local products. \*Book in advance when ordering more than 10. TEL 0081 (0)547-45-2230

#### Soba & Udon stand-up meal

You can find the stall next to the shops at Senzu station. Try the most popular Sansai Soba (buck-wheat noodles) in a broth topped with wild vegetables)

## History of Oigawa Railway

Our history goes back to 1925 with a mission to facilitate an electric power plant upstream and to carry material. It took six years to launch the main railway and has been supporting the local industries ever since. After the war, the northern railway, which was originally for hydro-power development, was redeveloped for sightseeing. This is what is now known as Southern Alps Abt Line. We re-introduced Steam Locomotives in 1976 in its active form as dynamic storage experts. Since then, the railway company has been supported by railway fans around the country as it continues to pass on the history and Steam Locomotives to the future.

